



See money differently

Quarterly Report: **Nedgroup Investments** **XS Guarded Fund of Funds**

as at 30 June 2021

Quarterly report: Nedgroup Investments



Domestic asset class returns (ZAR)



SA Equity



Smaller SA Inc. counters demonstrated resilience, but the resources sector had a poor June (-6.5%)

25.1% 1 year

8.1% 3 years

12.3% LT average

SA Property



SA property was the top performer in Q2, with counters like Vukile and Sirius leading the charge

25.2% 1 year

-8.9% 3 years

11.2% LT average

SA Bond



The longer-end of the curve outperformed, suggesting the pricing in of a rate hiking cycle

13.7% 1 year

9.2% 3 years

7.0% LT average

SA Cash



The MPC unanimously decided to keep rates unchanged at 3.5% at the May meeting

3.5% 1 year

5.4% 3 years

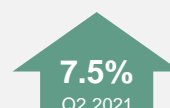
5.9% LT average



Global asset class returns (USD)



Global Equity



Growth stocks outperformed, tech rebounded and the EU benefited from strong corporate earnings

39.9% 1 year

15.1% 3 years

8.7% LT average

Global Property



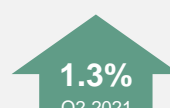
Property markets globally continue to recover, as investors become more confident of its outlook

34.9% 1 year

7.4% 3 years

6.7% LT average

Global Bond



The US 10-year yield fell on the back of many countries' - incl. the US - inflation exceeding expectations

2.6% 1 year

4.2% 3 years

4.6% LT average

US Cash



The US Fed and other central banks are taking a slightly more hawkish stance on rates

0.2% 1 year

1.5% 3 years

4.3% LT average



Exchange rates (Rand spot rate and quarterly change)



US Dollar R14.28



The rand strengthened by more than 5% to the US dollar in May, reaching its best level since 2019 at the start of June. The demand for SA's mining commodities, resulting in the last two quarters being of the largest current account surpluses in our economic history, was one of the key drivers of rand strength.



British Pound R19.73



A number of the domestically focused areas fell back sharply in June, partly due to concerns around the impact of the covid-19 delta variant on the UK's re-opening plans. Retailers and travel and leisure sectors in particular performed poorly as the UK government delayed the date to further lift social distancing laws.



Euro R16.93



In Europe, the vaccine rollout has gathered pace, and a more sustained reopening of economies is on track for the second half of the year. The flash Markit eurozone composite PMI rose to 59.2 in June, its highest level since June 2006. Eurozone inflation was estimated at 1.9% in June, down from 2.0% in May.

Quarterly report: Nedgroup Investments



Domestic performance drivers



Highlights

- The Constitutional Court found former president Zuma guilty of contempt of court and issued a sentence of 15 months imprisonment. While the rule of law features prominently in the words of the ruling, their consequences perhaps speak even louder.
- Reforms took centre stage in June and appear to be gaining momentum. Government confirmed that Takatso, a consortium of private investors, will be the preferred equity partner for embattled air carrier, South African Airways. Transnet will unbundle the ports business to establish a new, independent Transnet National Ports Authority and the electricity self-generation limit will be increased to 100MW from 1MW previously.



Low points

- With the delta variant of covid-19 spreading rapidly in South Africa, the severity of the third wave prompted a move to Alert Level 4 restrictions for two weeks, to be reassessed in early July. While the global recovery is providing cyclical tailwinds, stricter lockdowns are an unfortunate setback.
- The BER consumer confidence index fell this quarter, after recording four consecutive positive quarters. This survey reflects “very depressed consumer confidence levels” and also highlights the divergence of the impact of covid-19 on the different income groups within South Africa.



Global performance drivers



Highlights

- At the end of the quarter, vaccination rates were close to 50% in the United States and Europe, and over 60% in the United Kingdom. New, more contagious covid-19 variants are spreading, but the existing vaccines seem effective against these variants.
- The European Commission signed off on the first of the national recovery plans which will receive funding from the €800 billion Next Generation EU fund. Spain and Portugal were the first countries to have their spending plans approved.



Low points

- In late June President Joe Biden also secured a deal on an infrastructure package worth about \$1 trillion to upgrade roads, bridges and broadband networks over the next eight years. The agreement fell short of the \$2.3 trillion infrastructure spending plan announced in March, and did not address the social safety-net spending proposed in April.
- Indian hospitals ran out of beds and life-saving oxygen during a devastating second wave of coronavirus in April and May. This devastating surge in covid-19 cases and fatalities, highlighted the importance of rapid vaccination rollouts.

Quarterly report:

Nedgroup Investments XS Guarded Fund of Funds



Fund overview

Max equity

40%

Time frame

Min **3** years

Benchmark

Inflation
+3%

Peer group

**SA Multi-
Asset Low
Equity**

Regulation 28

Compliant

Risk profile



Fund costs (C – clean class)

Management fee* (Excl. Vat)

1.15%

Total expense ratio

1.36%

Transaction charges

0.07%

Total investment charges

1.43%



Benefits of the XS Fund of Funds range

Competitive pricing



Diversified across
Asset classes



Investment experts



Passive and active underlying
investments



Tax
Efficient



Ongoing
Due diligence



as at 30 June 2021

**Includes BOTH multi-manager and underlying fund fees. Both the Total Expense Ratio (TER) and Transaction Costs (TC) of the Fund are calculated on an annualised basis, beginning 1st January 2018 and ending 31st March 2021

Quarterly report:

Nedgroup Investments XS Guarded Fund of Funds



XS Fund of Funds performance contribution – Q2 2021



Positive contributors this quarter

- The domestic flexible income bucket was the biggest contributor during the second quarter, with the local bond market delivering exceptional returns. Our asset managers continued to predominantly hold the SA 10-Year nominal bond and 5-Year SA inflation linked bond. Meanwhile, the position in Royal Bafokeng Convertible generated strong returns for the fund. In addition, the fund's exposure to preference shares (with the majority exposure in the Big 4 banks), meant that the fund could participate in the recovery in capital values as banks recovered from the initial COVID19 shock.
- South Africa's listed property sector was the top performing domestic asset class in the second quarter of 2021. The fund's strategy of having very little exposure to large malls and offices tenanted to the private sector, while continuing to have exposure to rural and township neighbourhood and convenience retail centres in the Western Cape (with an emphasis on logistics properties in that region), boded well for the fund.



Detractors this quarter

- The domestic equity carve-out was a detractor to the overall fund performance. While domestically focussed companies such as banks, retailers and real estate companies were up strongly, the likes of Naspers and Prosus were flat and down -12% respectively. Naspers is the largest position within the funds top 10 holdings and was a major detractor as the much-hyped value unlock transaction was poorly received by the market. Interventions by Chinese regulators further spooked the market.
- In terms of emerging markets, disappointingly for the fund, stock selection in China, Brazil, Russia and India detracted from performance. Overweight position in Brazil hurt the manager's performance, whilst underweights positions in the Gulf region and in South Africa, dragged on performance.

Quarterly report: Nedgroup Investments XS Guarded Fund of Funds



Fund performance (clean class)

Q2'21 return

+2.5%

Peer group average: +2.4%

Ytd return

+7.0%

Peer group average: +6.0%

1yr annualised return

+11.6%

Peer group average: +10.9%

3yr annualised return

+5.9%

Peer group average: +6.5%

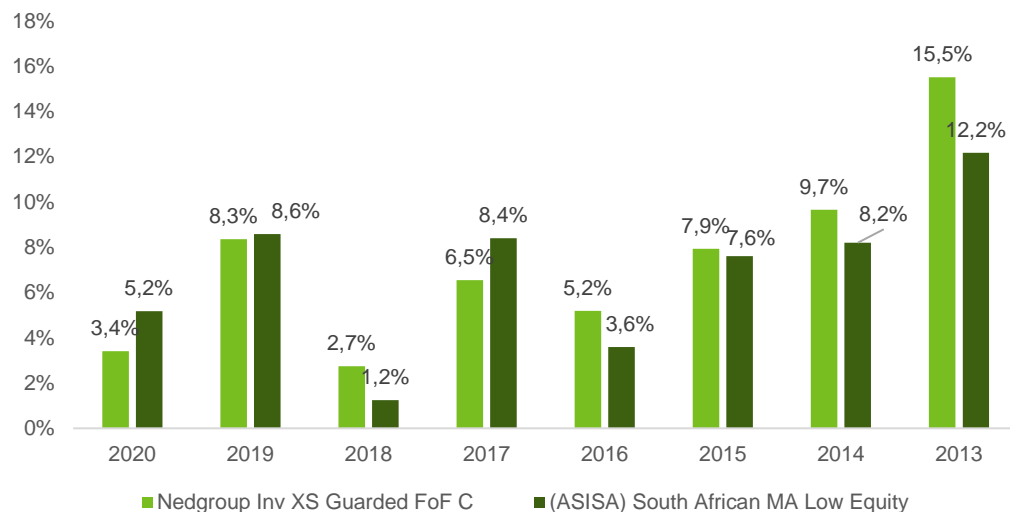
5yr annualised return

+6.0%

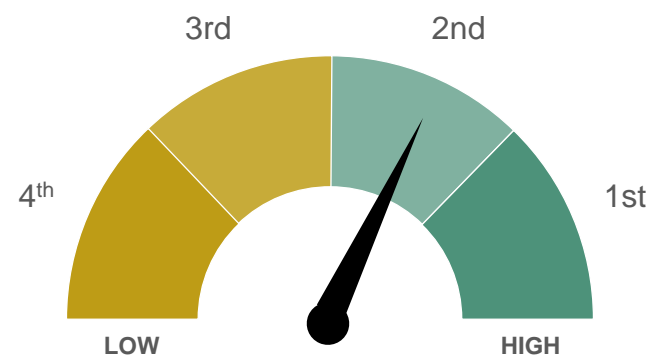
Peer group average: +6.0%



Calendar year performance



Peer group quartile ranking: 1yr



as at 30 June 2021

Quarterly report: Nedgroup Investments XS Guarded Fund of Funds



Risk measures since inception

Rolling 3yr return

91%

Hit rate: outperforming
peer group average

Volatility

4.9%

SA equity market: 15.2%

Max drawdown

-10.6%

SA equity market: -40.4%

Sharpe ratio

0.5

SA equity market: 0.4

% Positive months

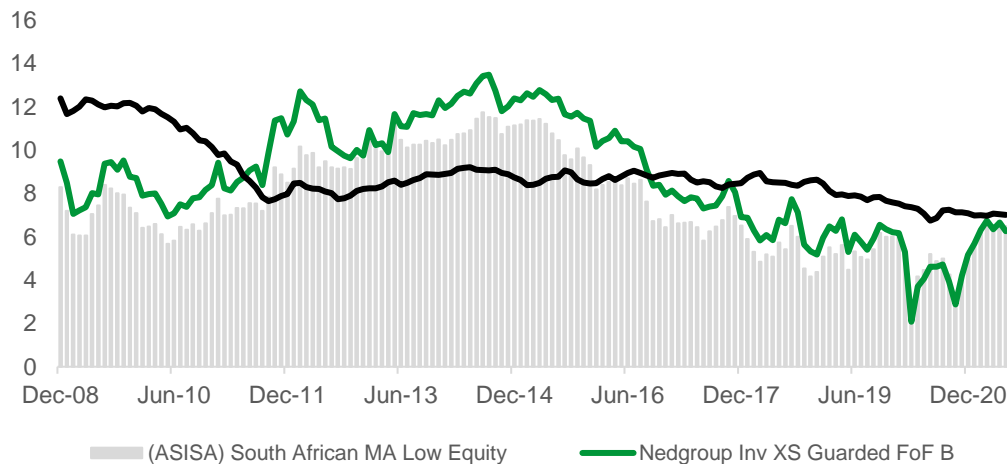
89%

SA equity market: 72%

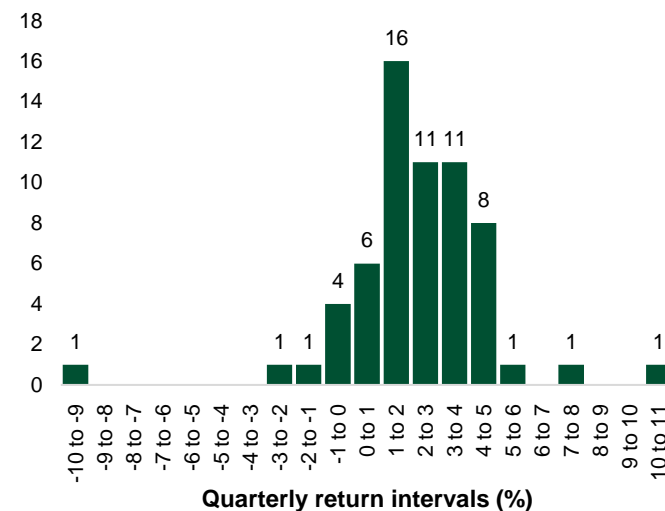


Rolling 3-year annualised return

Since inception Sep 2004 to date



Quarterly return distribution



Quarterly report:

Nedgroup Investments XS Guarded Fund of Funds



Performance across classes

	A Class (all in)	B Class (lisp)	C Class (clean)	Peer group	SA inflation
Quarter	2.2%	2.6%	2.5%	2.4%	1.4%
1 year	10.3%	12.2%	11.6%	10.9%	5.2%
3 year	4.7%	6.4%	5.9%	6.5%	3.9%
5 year	4.8%	6.6%	6.0%	6.0%	4.3%



Costs across classes

	Management fee (excl. Vat)	financial planner	total expense ratio	transaction charges	total investment charges
A Class (all-in)	1.15%	1.00%	2.51%	0.07%	2.58%
B Class (LISP)	0.85%	N/A	1.01%	0.07%	1.08%
C Class (clean)	1.15%	NA	1.36%	0.07%	1.43%

as at 30 June 2021

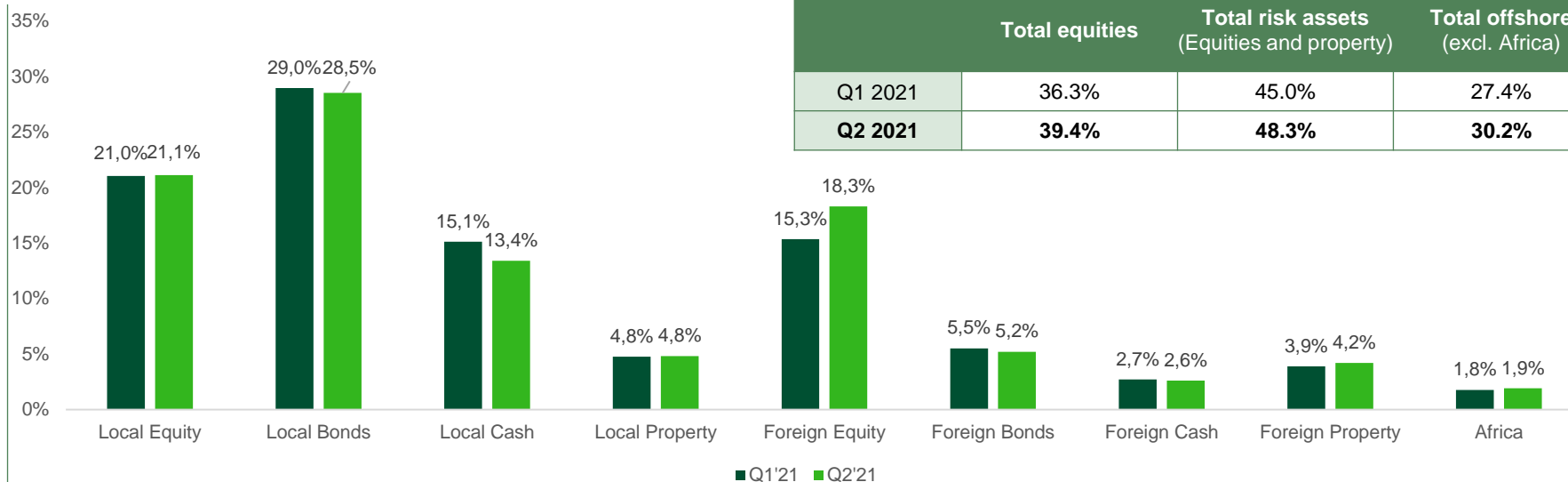
* Includes BOTH multi-manager and underlying fund fees. Both the Total Expense Ratio (TER) and Transaction Costs (TC) of the Fund are calculated on an annualised basis, beginning 1st of October 2017 and ending 31st of March 2021

Quarterly report:

Nedgroup Investments XS Guarded Fund of Funds



Asset allocation changes



	Total equities	Total risk assets (Equities and property)	Total offshore (excl. Africa)
Q1 2021	36.3%	45.0%	27.4%
Q2 2021	39.4%	48.3%	30.2%



Summary of recent changes

The following asset allocation decisions were made during the quarter:

- Increased our **global equity** exposure by introducing fund manager Dodge & Cox. The manager has an **emerging market** tilt.
- While we are still overweight **domestic bonds**, we reduced our tactical allocation to domestic bonds and in turn increased our allocation to domestic equity.
- Continued to reduce the underweight position in **domestic equity** by allowing our weight to drift upwards with the markets towards a neutral position.

Quarterly report:

Nedgroup Investments XS Guarded Fund of Funds



Asset allocation

Domestic Equity



21.1%

Domestic Property



4.8%

Domestic Fixed Interest



41.9%

Foreign Equity



18.3%

Foreign Property



4.2%

Foreign Fixed Interest



7.8%

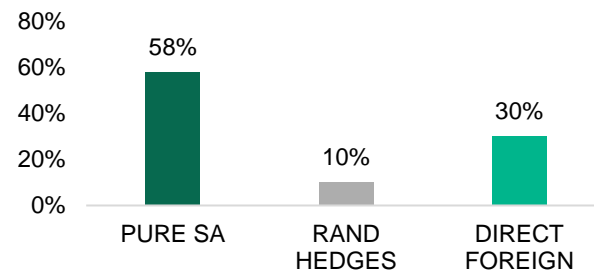
Africa



1.9%



Regional exposure



Top ten holdings (as a % of fund)



2.4%



1.4%



0.9%



0.8%



0.7%



Standard Bank

0.6%



0.6%



0.5%



0.5%



0.4%

as at 30 June 2021

Quarterly report:

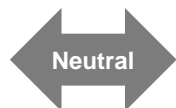
Nedgroup Investments XS Guarded Fund of Funds



Domestic asset class positioning



Domestic Equity



21.1%

- We have moved to reduce the underweight position to this asset class as opportunities have been created in the market.
- Small cap stocks tend to be most exposed to the domestic environment and while they may benefit during a turnaround, during periods of low growth they are the most exposed.

Domestic Property



4.8%

- We acknowledge the very attractive yields on offer.
- Returns are likely to be constrained by balance sheet concerns and remains under continuous review. Furthermore, current assumptions for expected property returns include no distribution growth and no capital re-rating.

Domestic Bond



28.5%

- The steep SA yield curve keeps long-dated bonds at attractive yields, however, fiscal risks and risks relating to SOEs are still prevalent.
- Bonds have been reliable source of income for client portfolios during the heart of the Covid-19 pandemic but the inflation outlook remains a key consideration.

Domestic Cash



13.4%

- Provides consistent return profile however, cash interest rates remain low.
- The healthy cash balance also provides optionality (dry power) should opportunities arise.



Global asset class positioning



Global Equity



18.3%

- Unprecedented stimulus coupled with accommodative central bank policy should prove positive for equity markets and we believe prospects remain favourable.
- However, we remain cautiously optimistic on equity markets. A balanced exposure to growth and value stocks remains important

Global Property



4.2%

- We have grown increasingly positive on the prospects for property, and specifically commercial property within the prime space of central retail and hospitality to benefit from a continued economic reopening.

Global Bond



5.2%

- The conundrum continues with fixed income markets and the longer term prospect of higher rates.
- Our preference remains for taking less duration risk, but greater credit risk within portfolios to generate attractive risk adjusted return.

Global Cash



2.6%

- Cash positions remain as the underlying managers look for compelling, idiosyncratic opportunities.

Quarterly report:

Nedgroup Investments XS Guarded Fund of Funds



Domestic: fund manager exposures

Equity General: 14.2%



Small/Mid Cap Equity: 2.7%



Passive Multi-Asset: 19.8%



Property: 3.6%



Flexible Income: 32.5%



Offshore and Africa: fund manager exposures

Equity: 12.9%



EM Equity: 2.9%



Multi-Asset: 7.7%



Property: 3.9%



Africa: 2.1%



As at 30 June 2021
The residual balance (out of 100%) is held as domestic cash to provide liquidity

Disclaimer

Nedgroup Collective Investments (RF) Proprietary Limited is the company that is authorised in terms of the Collective Investment Schemes Control Act to administer the Nedgroup Investments unit trust portfolios. Unit trusts are generally medium to long term investments. The value of your investment may go down as well as up. Past performance is not necessarily a guide to future performance. Nedgroup Investments does not guarantee the performance of your investment and even if forecasts about the expected future performance are included you will carry the investment and market risk, which includes the possibility of losing capital. Unit trusts are traded at ruling prices and can engage in borrowing and scrip lending. Certain unit trust funds may be subject to currency fluctuations due to its international exposure. Nedgroup Investments has the right to close unit trust funds to new investors in order to manage it more efficiently. A schedule of fees and charges and details of our awards are available on request from Nedgroup Investments. A fund of funds may only invest in other unit trust funds, that levy their own charges, which could result in a higher fee structure. Nedgroup Investment Advisors (Pty) Ltd (the 'Investment Manager') an authorised as a financial services provider under the Financial Advisory and Intermediary Services Act (FSP No. 1652), is the appointed Investment Manager of the Management Company.

Certain Nedgroup Investments unit trust portfolios include international assets, whereby a change in the exchange rates may cause the value of those investments to rise and fall. Excessive withdrawals from the portfolio may place the portfolio under liquidity pressures and that in such circumstances a process of ring-fencing of withdrawal instructions and managed pay-outs over time may be followed.

Please note that Nedgroup Collective Investments (RF) Proprietary Limited is not authorised to and does not provide financial advice. This presentation is of a general nature and intended for information purposes only. It is not intended to address the circumstances of any investor and cannot be relied on as legal, tax or financial advice, either express or implied. Whilst we have taken all reasonable steps to ensure that the information in this document is accurate and current on an ongoing basis, Nedgroup Investments shall accept no responsibility or liability for any inaccuracies, errors or omissions relating to the information and topics covered in this presentation. Nedgroup Collective Investments (RF) Proprietary Limited is a member of the Association for Savings & Investment SA (ASISA).